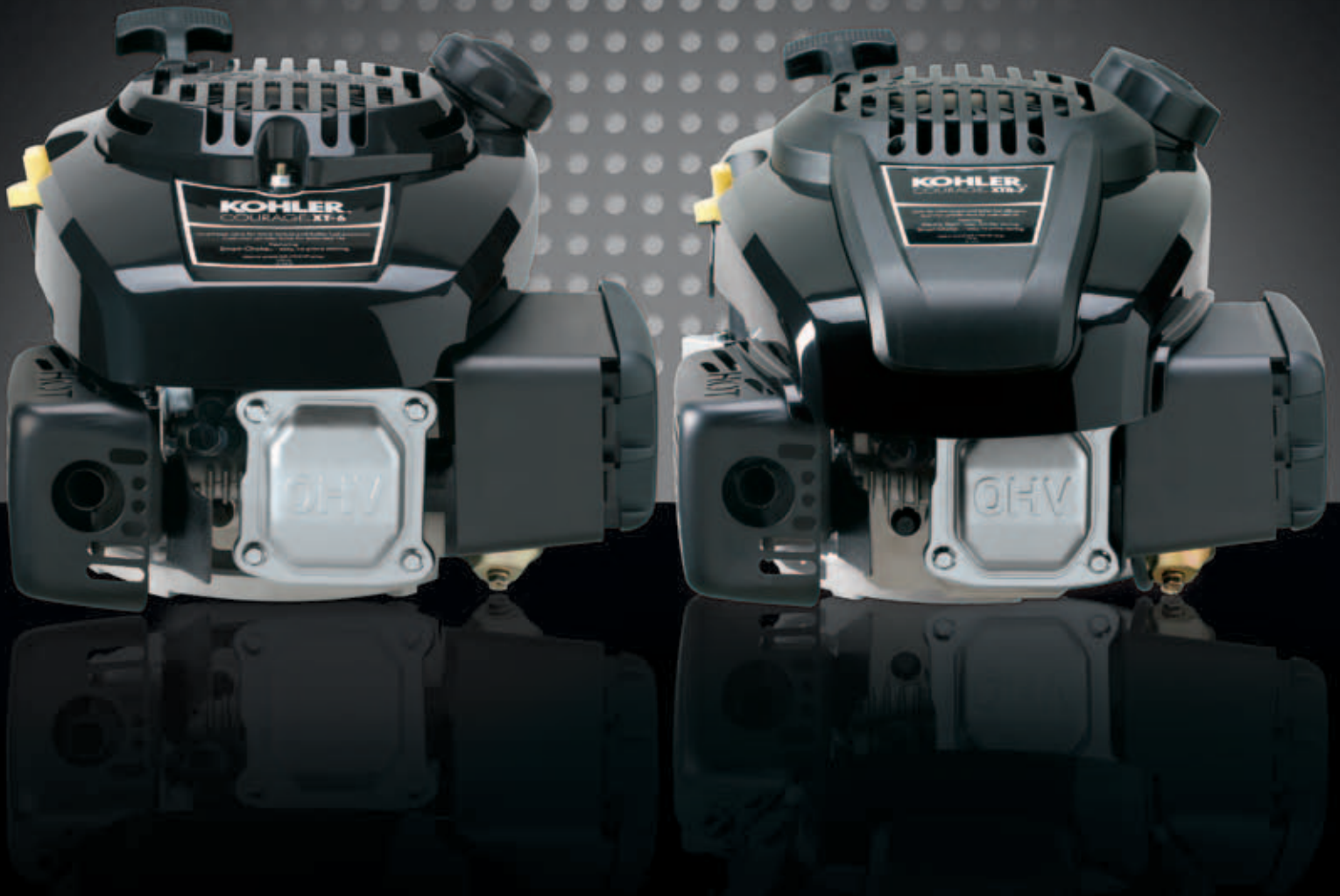


# KOHLER® Courage® XT-Series

XT-6, XTR-6, XT-7 and XTR-7 Engines



**KOHLER®**

# KOHLER®

PERFORMANCE  
ENGINEERING

It's true. Not all equipment is created equally. Equipment powered by a KOHLER® Courage® XT engine is going to perform better. That's because every part and every component on a Courage XT engine has to live up to Kohler's exclusive Performance Engineering standards. Take our Smart-Choke™ technology. Smart-Choke requires no priming or choking, so you'll never have to worry about flooding your engine. Just pull the remote starter recoil – or for electric-start engines, simply turn the key – and you're up and running. That's because KOHLER Smart-Choke automatically adjusts the amount of fuel needed to start the engine. It's features like our Smart-Choke that put KOHLER engines in a class all by themselves and is further proof that better equipment begins with better engines.



# Made the Only Way We Know. Professional-Grade.

More and more homeowners are demanding products that deliver professional results – products that offer years of dependable, worry-free performance. For over 90 years, Kohler has been engineering the best engines on the market. Features like cast-iron cylinder bores, overhead valves (OHV) and flywheel ball bearings enable Courage® XT engines to stand up to the rigors of repeated use in the toughest of conditions. And because the engines work so hard, the user won't have to, thanks to an array of operator-friendly features including Accu-Fill™ technology and easy-pull starting.



## Professional-Grade Design

Overhead valve design (OHV) provides enhanced fuel efficiency. Cast-iron cylinder bores add protection in extreme load and dirty operating conditions while flywheel ball bearings provide better protection operating at extreme angles.



## Exclusive Accu-Fill™ Easy-to-Fill Gas Tank

An industry first, Accu-Fill technology features a 45% larger opening and angled fuel neck making it incredibly easy to fill the gas tank. The fuel-level indicator helps prevent overfilling. And less spilling is better for the environment.



## Maximum Performance in Tough Conditions

KOHLER Consistent-Cut™ technology delivers consistent power to your deck across a wide range of loads, allowing the user to cut through thick, wet grass – conditions that stall the competition.



## Easy-to-Start by Design

The easy-pull recoil provides smooth, effortless starts while Smart-Choke™ technology eliminates the need to prime or choke the engine. Just pull the cord and you're up and running. The optional energy-saver electric start provides turnkey starting and uses less energy to yield more starts/battery charge.



## Easy to Maintain

With features like an air filter that can be changed without a single tool, 1/4-turn oil dipstick and multiple features only requiring maintenance annually, KOHLER Courage XT engines are incredibly easy to own.

### Emissions:

Certified for both EPA and California emissions standards. Precise air-to-fuel ratio for cleaner combustion with optimum horsepower and torque.

### Service:

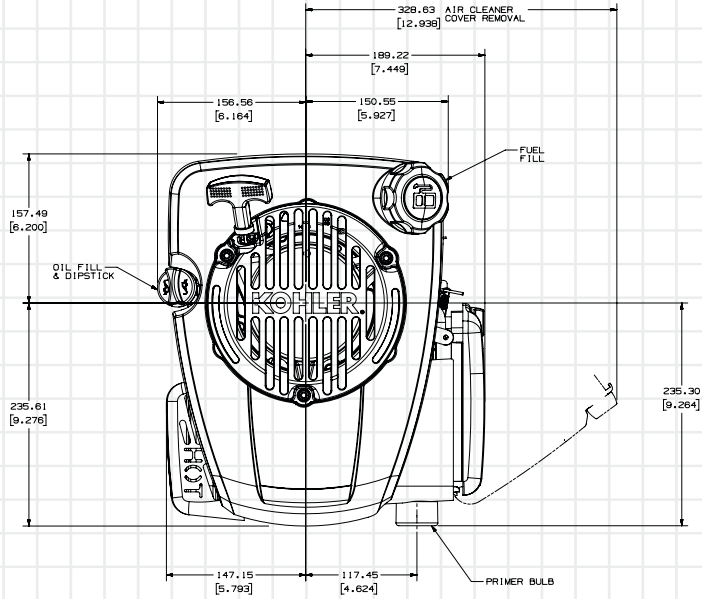
Backed by more than 13,000 dealers and distributors worldwide.

### Warranty:

Two-year limited warranty covering all consumer applications.

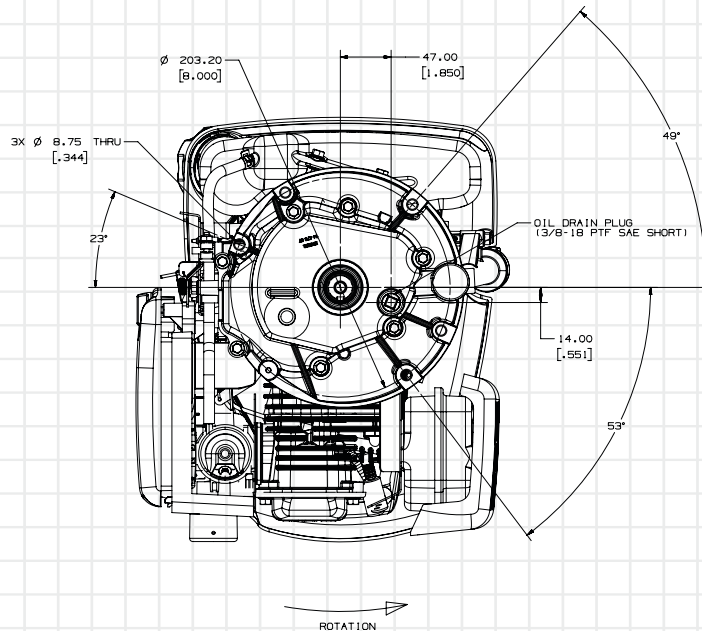
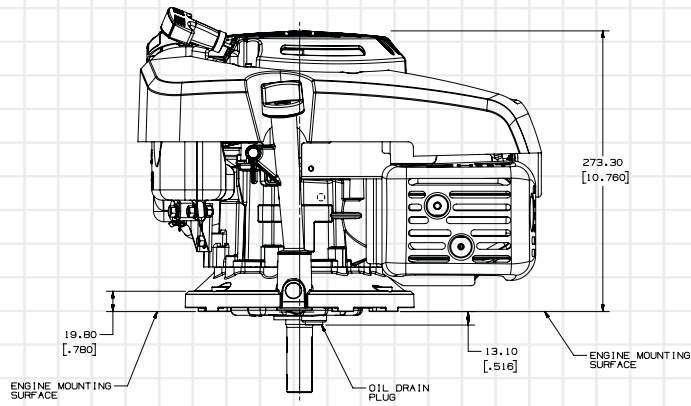
# XT-6 and XTR-6 3.8 net hp vertical-shaft engines

KOHLER® COURAGE® XT ENGINE ARCHITECTURE



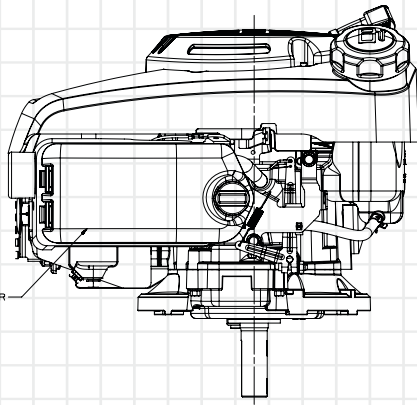
TOP VIEW

OIL FILL VIEW

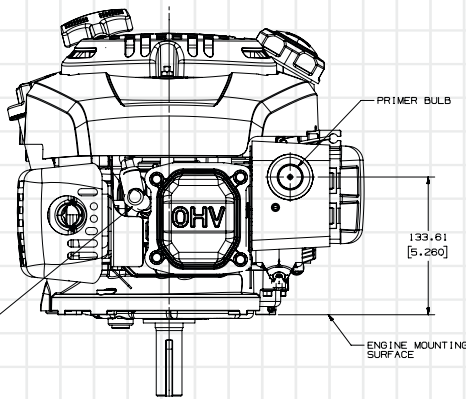


PTO VIEW

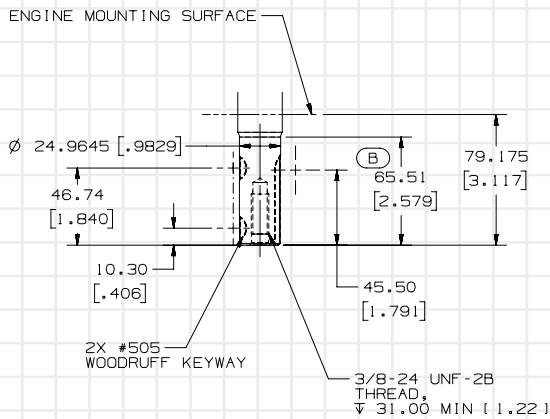
# XT-6 and XTR-6 3.8 net hp vertical-shaft engines



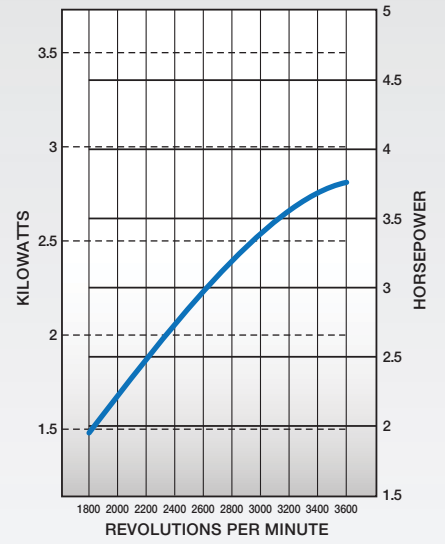
AIR FILTER VIEW



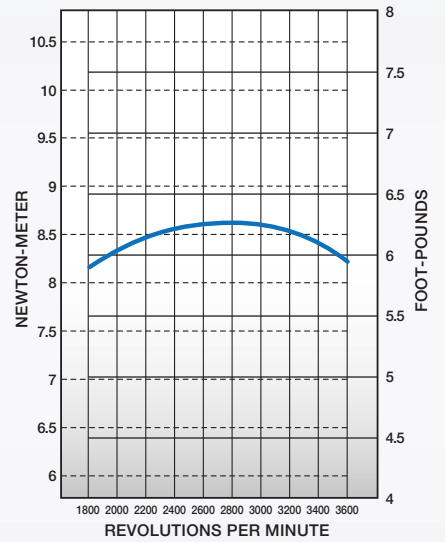
VALVE COVER VIEW



CRANKSHAFT EXTENSION



Maximum Power

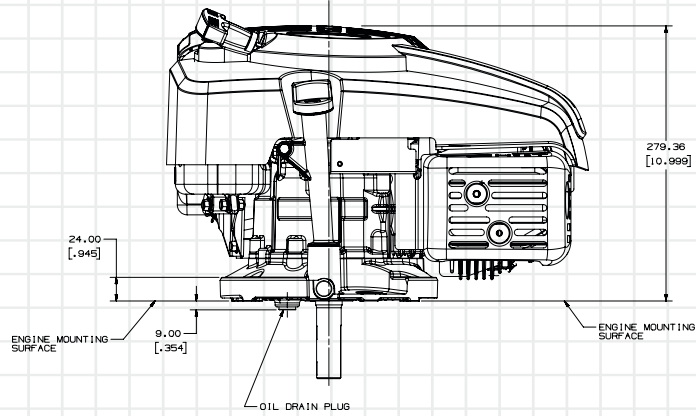


Maximum Torque

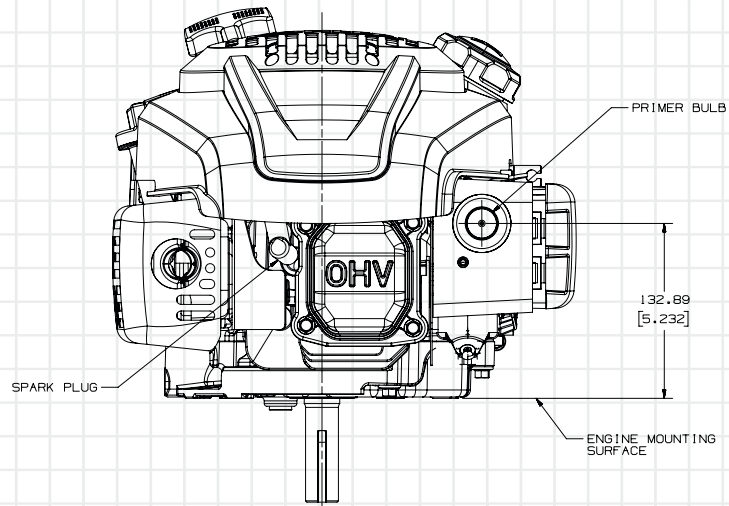
■ XT-6/XTR-6

# XT-7 and XTR-7 4.8 net hp vertical-shaft engines

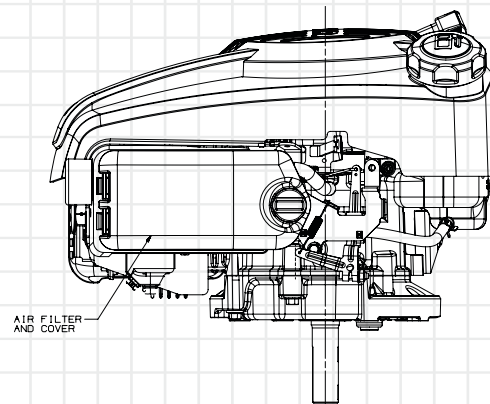
KOHLER® COURAGE® XT ENGINE ARCHITECTURE



OIL FILL VIEW

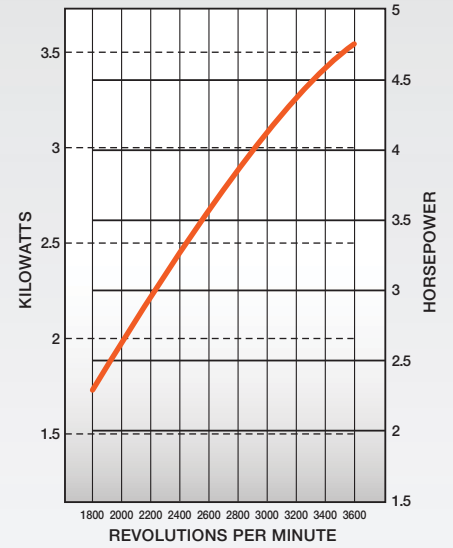
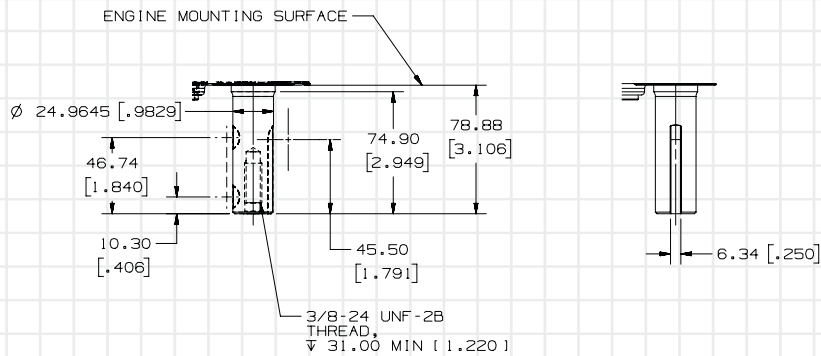
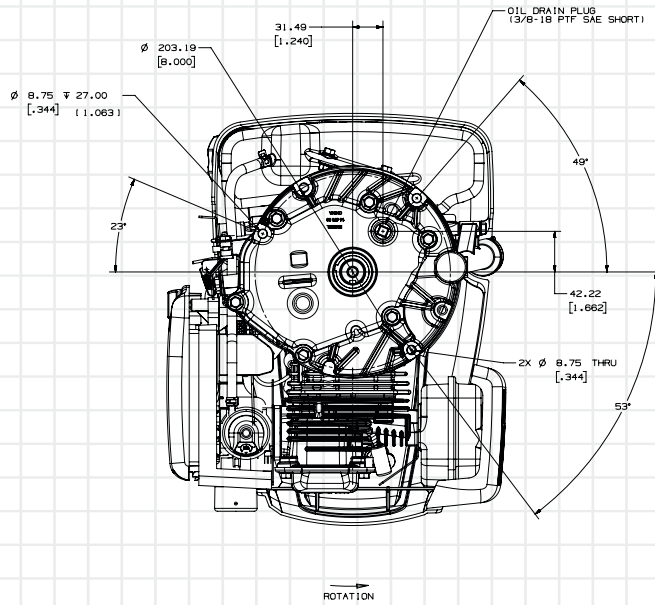
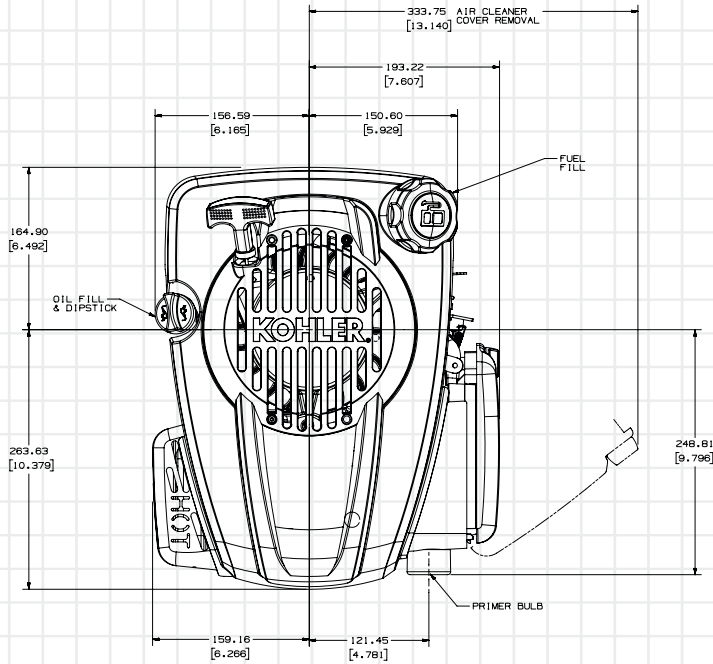


VALVE COVER VIEW

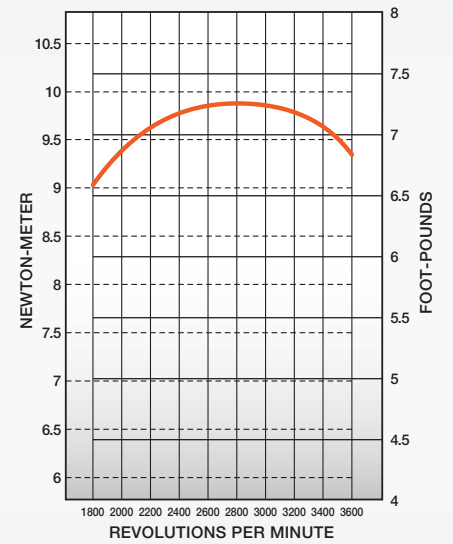


AIR FILTER VIEW

# XT-7 and XTR-7 4.8 net hp vertical-shaft engines



Maximum Power



Maximum Torque

XT-7/XTR-7

TOP VIEW

PTO VIEW

CRANKSHAFT EXTENSION

# KOHLER® Courage® XT-Series Model Specifications

Engine Type		Four-cycle, single-cylinder, air-cooled, vertical shaft, gasoline, OHV, with cast-iron cylinder bore			
Model		XT-6	XTR-6	XT-7	XTR-7
Net Peak Torque @ 2800 rpm	ft lb (Nm)	6.3 (8.5)		7.3 (9.9)	
Max Net Power @ 3600 rpm	hp (kW)	3.8 (2.8)		4.8 (3.6)	
Displacement	cu in (cc)	9.1 (149)		10.6 (173)	
Bore	in (mm)	2.6 (65)		2.7 (70)	
Stroke	in (mm)	1.8 (45)			
Compression Ratio		9.2:1		8.5:1	
Dry Weight	lb (kg)	27.5 (12.5)	33.5 (15.2)	30.5 (13.8)	36.5 (16.6)
Lubrication		Splash			
Starting	U.S. qt (L)	Recoil	Electric	Recoil	Electric
Fuel Capacity	U.S. qt (L)	1.2 (1.1)		1.5 (1.4)	
Oil Capacity	U.S. oz (L)	20 (.6)			
*Dimensions L x W x H	in (mm)	16 x 13.2 x 10.8 (406 x 336 x 274)		17.1 x 13.9 x 11 (434 x 353 x 278)	

Information subject to change without notice.

Horsepower ratings meet Society of Automotive Engineers Small Engine Test Code J1940. Actual engine horsepower is lower and affected by, but not limited to, accessories (air cleaner, exhaust, charging, cooling), application, engine speed and ambient operating conditions (temperature, humidity and altitude). For more information, contact Kohler Co. Engine Engineering.

Kohler reserves the right to change product specifications, designs and equipment without notice and without incurring obligation.

\*Length is front of blower housing to end of blower housing. Width is air cleaner to muffler guard. Height is mounting surface to grass screen.

## Standard Features

- OHV
- Cast-iron cylinder bore
- Primer bulb
- Flywheel ball bearing
- Accu-Fill™ easy-to-fill tank
- Easy-pull recoil
- Yearly service intervals
- Fixed speed
- Flywheel brake
- Internally vented carburetor
- Easy ¼ turn extended dipstick
- Panel-type air filter
- Recoil start
- Muffler with internationally compliant guard
- International symbols
- Electronic ignition
- Internal fuel filter

## Popular Factory Options

- Smart-Choke™
- Remote manual choke
- Blade brake clutch (BBC)
- Heavy flywheel\*
- Engine-mounted controls\*
- Six-position recoil\*
- Variable speed
- Remote ignition shutdown
- Tethered fuel cap
- Kill switch
- Foam air cleaner\*
- Side-discharge muffler\*
- Precleaner
- External fuel filter
- Energy-saver electric starter
- CARB Tier 3 compliance

\*Utility engine options

For more information, contact your KOHLER source of supply, or call toll-free in the U.S. and Canada 800-544-2444.

Kohler Co., Kohler, Wisconsin 53044 Tel 920-457-4441 Fax 920-459-1570

[KohlerEngines.com](http://KohlerEngines.com)

© 2010 by Kohler Co. All rights reserved  
 KOHLER®, Courage®, Accu-Fill™, Smart-Choke™ and Consistent-Cut™ are trademarks of Kohler Co.

**KOHLER**®

Relentless Power.  
 Legendary Performance.

Printed in U.S.A. E-2131-B 10/10