



Shell
PANOLIN



TDX

World-class experience.
Local know-how.





Shell PANOLIN

Shell PANOLIN ecofriendly nontoxic biodegradable products

Reducing environmental impact without compromising performance

High-performance ecofriendly nontoxic biodegradable lubricants help customers to manage their product-related sustainability needs while protecting their equipment and the ecosystem they operate in. Many Shell PANOLIN products carry ecolabel certifications.

Shell PANOLIN Environmentally Acceptable Lubricants (EAL) are designed with these challenging conditions in mind – as well as the longer oil life and performance needed for use in industrial applications.

Choosing the right biodegradable lubricants and implementing ongoing monitoring with a service like Status Oil Analysis helps extend equipment life, maximize performance, and lower your total cost of ownership – and protect the environment.



For New Zealand customers looking to take concrete steps towards improving sustainability, Shell PANOLIN presents an easy choice. A complete range of ecofriendly nontoxic biodegradable products for a wide range of equipment applications.



In our Shell PANOLIN range, we offer Environmentally Acceptable Lubricants (EAL) products designed to provide excellent equipment protection in harsh conditions. Here are the benefits:

Biodegradable: Over 60% breakdown within 28 days (according to OECD 301 B standard).

Environmentally Friendly: No bioaccumulation and minimal toxicity, reducing environmental impact.

Extended Oil Change Intervals: Maintenance intervals extended from 5,000 up to 20,000 hours, leading to less maintenance and reduced downtime.

Cost Savings: Lower maintenance and replacement costs due to longer operational life and reduced oil consumption.

Reduced CO2 Emissions: Less oil consumption and longer oil change intervals contribute to a lower ecological footprint.

Excellent Performance: Suitable for extreme pressures and temperatures, with reliable performance in low-temperature conditions.





The Shell PANOLIN range includes the high-performance, S4 lubricants, designed to run equipment without compromise. These lubricants help extend oil life compared to unsaturated ester-type fluids, resulting in potential cost savings, reduced environmental impact and less downtime.

Hydraulics

Biodegradable hydraulic fluids for multiple hydraulic applications and viscosity requirements. Shell PANOLIN S4 HLP Synth 32, 46 and 68 are Bosch Rexroth approved biodegradable hydraulic oils designed to help equipment operate without interruptions. There are multiple examples of lifetime filling, as longer oil drain intervals mean less being produced, purchased and disposed of.

Greases

Improve system efficiency, extend equipment service life and drive your productivity with the Shell PANOLIN biodegradable greases. Shell PANOLIN greases can help to maintain or even heighten the efficiency of your systems, even under harsh working conditions.

Gears

Protect your gearbox components from wear and contamination, helping you to drive reliable equipment operations. Increase productivity with effective lubrication that helps your equipment meet its capabilities and perform at optimal efficiency.

UTTO Fluids

Shell PANOLIN Biofluid ZFH is a readily biodegradable universal tractor transmission oil (UTTO) with good thermal ageing stability.

Stern Tube

Shell PANOLIN S4 Stern Tube Fluid EAL 100 is a non-emulsifying synthetic fluid specially developed for use in stern tubes. Manufactured from fully saturated esters, designed to offer excellent lubrication performance whilst also being readily biodegradable with low toxicity, an Environmentally Acceptable Lubricant (EAL) and holds the EU Ecolabel.

Engine Oil

Engine oils based on saturated synthetic esters for the latest diesel engines Euro 4, 5 and 6 Engines. Actual effects and benefits may vary. For more detailed information on each product and range please see the technical datasheets.



Shell PANOLIN for construction

Application guide

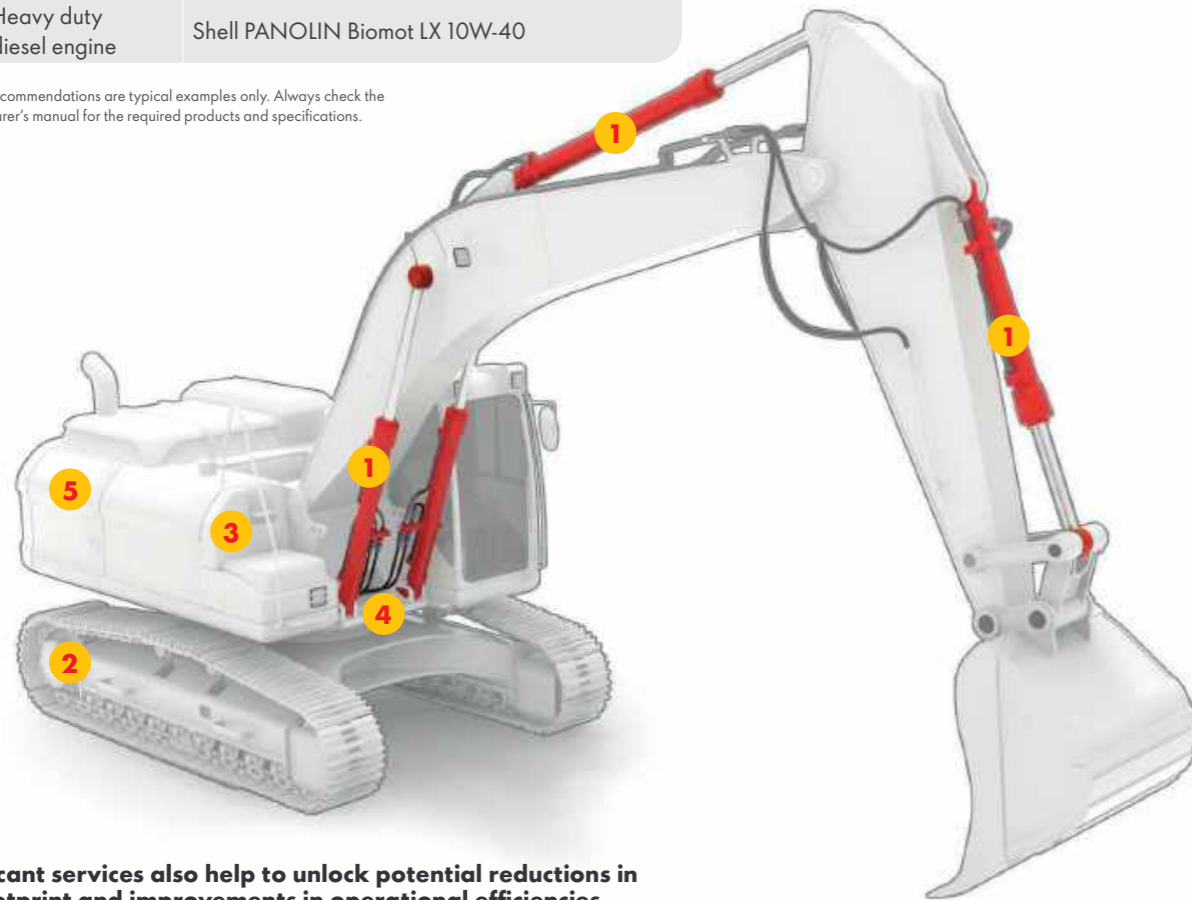
Component	Shell recommendation
1 Hydraulic systems	Shell PANOLIN S4 HLP Synth (or EAL) 46, 68, 100 Shell PANOLIN S2 Hydraulic DU EAL 46, 68
2 Gears	Shell PANOLIN S4 Gear (or EAL) 150
3 Final drive and axles	Shell PANOLIN S4 Gear RS 80W90
4 Automatic greasing systems	Shell PANOLIN S5 Grease EAL V120P 2
5 Pivot points	Shell PANOLIN S5 Grease EAL V320 2
6 Heavy duty diesel engine	Shell PANOLIN Biomot LX 10W-40

Which products should I use?

Reducing the environmental impact of critical operations does not mean that you need to compromise on productivity or protection.

Shell has a broad portfolio of products designed for a wide range of construction conditions and applications; these include lubricants especially suited for environmentally sensitive areas and operations in or near water.

Product recommendations are typical examples only. Always check the manufacturer's manual for the required products and specifications.



Shell lubricant services also help to unlock potential reductions in carbon footprint and improvements in operational efficiencies.

Shell PANOLIN for forestry

Application guide

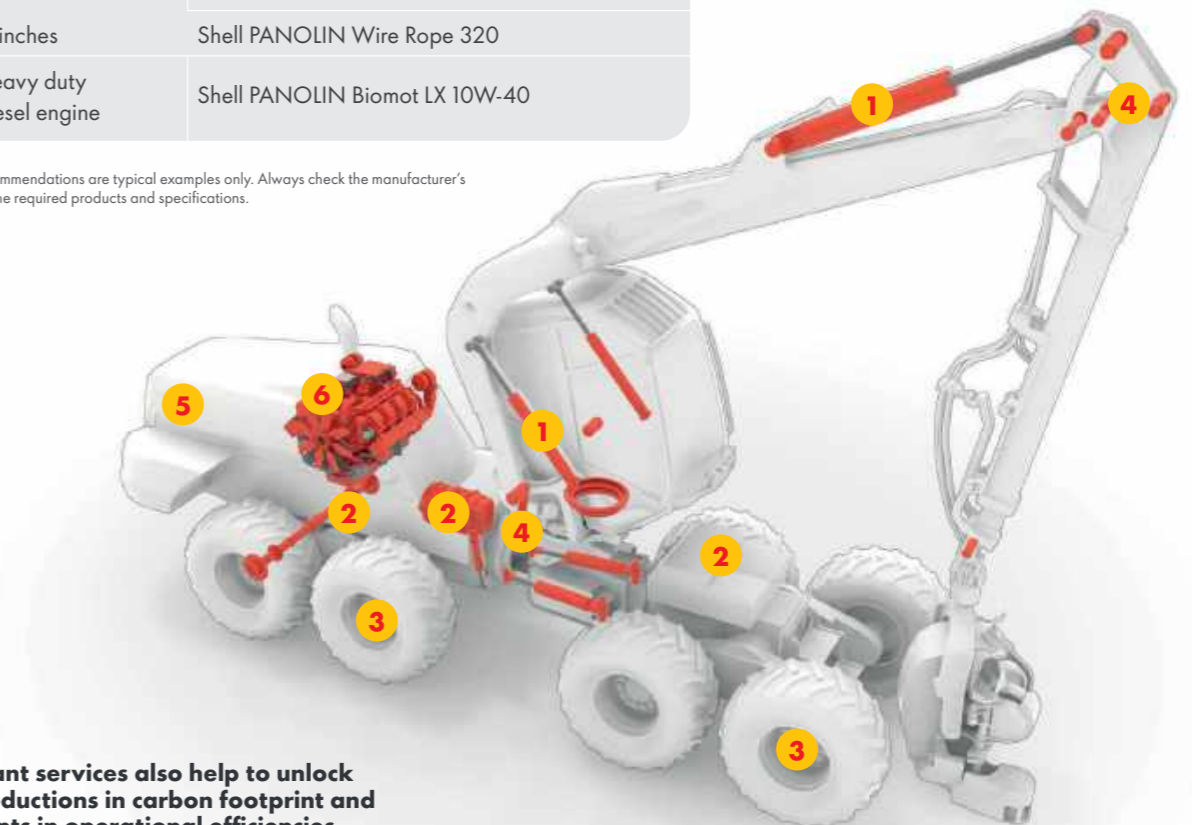
Component	Shell recommendation
1 Hydraulic cranes	Shell PANOLIN S4 HLP Synth (or EAL) 46, 68, 100 Shell PANOLIN S2 Hydraulic DU EAL 46, 68
2 Transfer boxes	Shell PANOLIN S4 Gear (or EAL) 150
3 Rear and front bogie casings/planetaries	
4 Rear and front axle wheel bearings	Shell PANOLIN S5 Grease EAL V120P 2
5 Central lubrication systems	
6 Pin and bush	Shell PANOLIN S5 Grease EAL V320 2
7 Winches	Shell PANOLIN Wire Rope 320
8 Heavy duty diesel engine	Shell PANOLIN Biomot LX 10W-40

Which products should I use?

Reducing the environmental impact of critical operations does not mean that you need to compromise on productivity or protection.

Shell has a broad portfolio of products designed for a wide range of operating conditions and applications; these include lubricants especially suited for environmentally sensitive areas and operations in or near water.

Product recommendations are typical examples only. Always check the manufacturer's manual for the required products and specifications.



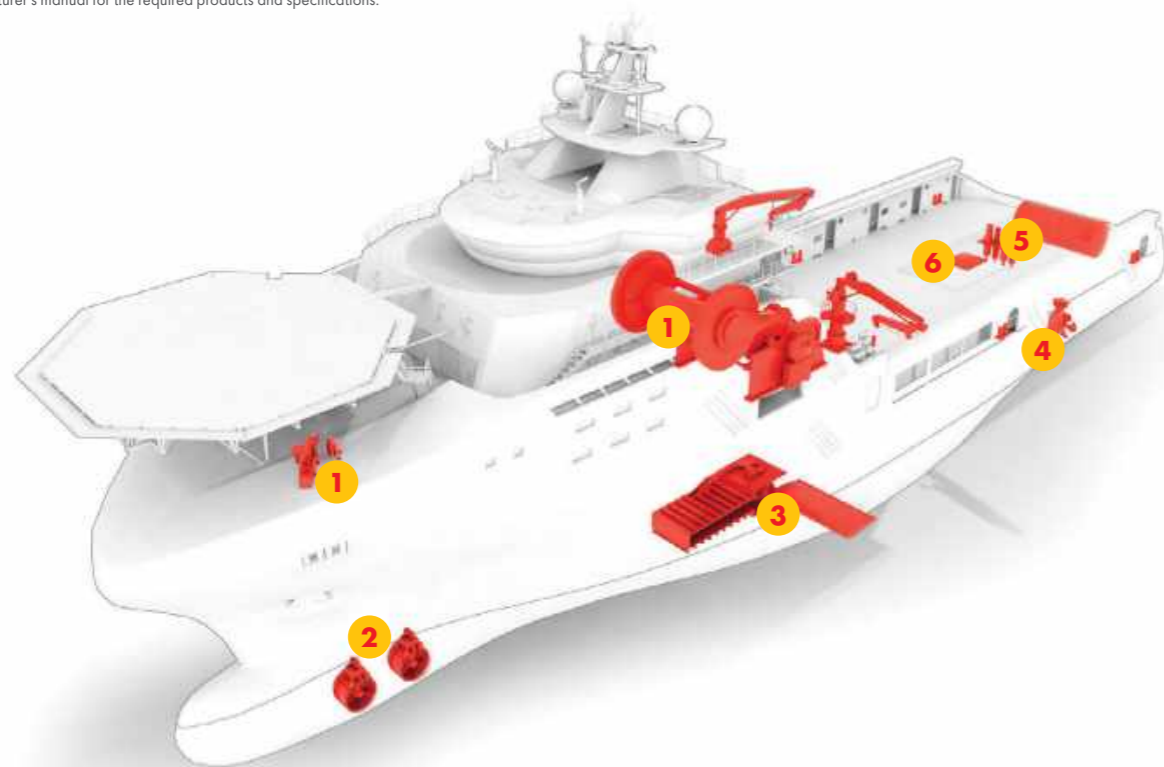
Shell lubricant services also help to unlock potential reductions in carbon footprint and improvements in operational efficiencies.

Shell PANOLIN for marine

Application guide

Component	Shell recommendation
1 Windlasses and winches	Shell PANOLIN S4 Gear EAL 68, 100, 150 Shell PANOLIN S4 HLP Synth EAL 46, 68 Shell PANOLIN S2 Hydraulic DU EAL 46, 68 Shell PANOLIN S5 Grease EAL A600P 1.5
2 Thrusters	Shell PANOLIN S4 Gear EAL 68, 100, 150 Shell PANOLIN S4 HLP Synth EAL 46, 68 Shell PANOLIN S2 Hydraulic DU EAL 46, 68 Shell PANOLIN S5 Grease EAL A600P 1.5 Shell PANOLIN S5 Grease EAL V120P 2
3 Stabilisers	Shell PANOLIN S4 HLP Synth EAL 46, 68 Shell PANOLIN S2 Hydraulic DU EAL 46, 68 Shell PANOLIN S4 Stern Tube EAL 100 Shell PANOLIN S4 Gear EAL 68
4 Propeller shaft seal and stern tube	Shell PANOLIN S4 Gear EAL 68, 100, 150 Shell PANOLIN S4 Stern Tube EAL 100
5 Fair leads, stern roller, rudder	Shell PANOLIN S5 Grease EAL A600P 1.5 Shell PANOLIN S5 Grease EAL V120P 2
6 Ramps, hatches and doors	Shell PANOLIN S4 HLP Synth EAL 46, 68 Shell PANOLIN S2 Hydraulic DU EAL 46, 68

Product recommendations are typical examples only. Always check the manufacturer's manual for the required products and specifications.



Which products should I use?

Reducing the environmental impact of critical operations does not mean that you need to compromise on productivity or protection.

Shell has a broad portfolio of products designed for a wide range of operating conditions and applications; these include lubricants especially suited for environmentally sensitive areas and operations in or near water.

Shell PANOLIN for marine

Application guide

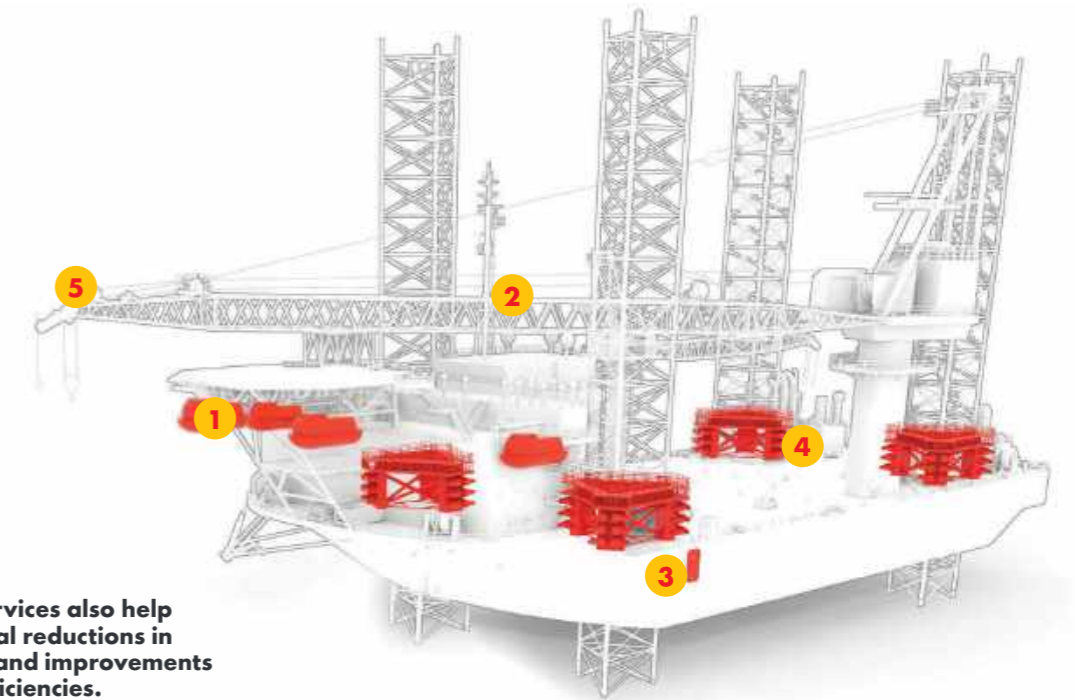
Component	Shell recommendation
1 Lifeboats	Shell PANOLIN S5 Grease EAL A600P 1.5
2 Cranes	Shell PANOLIN S4 HLP Synth EAL 46, 68 Shell PANOLIN S2 Hydraulic DU EAL 46, 68 Shell PANOLIN S5 Grease EAL A600P 1.5
3 Doors	Shell PANOLIN S4 HLP Synth EAL 46,68 Shell PANOLIN S2 Hydraulic DU EAL 46, 68
4 Jacking systems	Shell PANOLIN S4 Grease U68AP Shell PANOLIN S4 Gear EAL 68, 100, 150
5 Winches	Shell PANOLIN S4 Gear EAL 68, 100 Shell PANOLIN S4 HLP Synth EAL 46, 68 Shell PANOLIN S2 Hydraulic DU EAL 46, 68

Product recommendations are typical examples only. Always check the manufacturer's manual for the required products and specifications.

Which products should I use?

Reducing the environmental impact of critical operations does not mean that you need to compromise on productivity or protection.

Shell has a broad portfolio of products designed for a wide range of operating conditions and applications; these include lubricants especially suited for environmentally sensitive areas and operations in or near water.



Shell lubricant services also help to unlock potential reductions in carbon footprint and improvements in operational efficiencies.

Shell PANOLIN for mining

Application guide

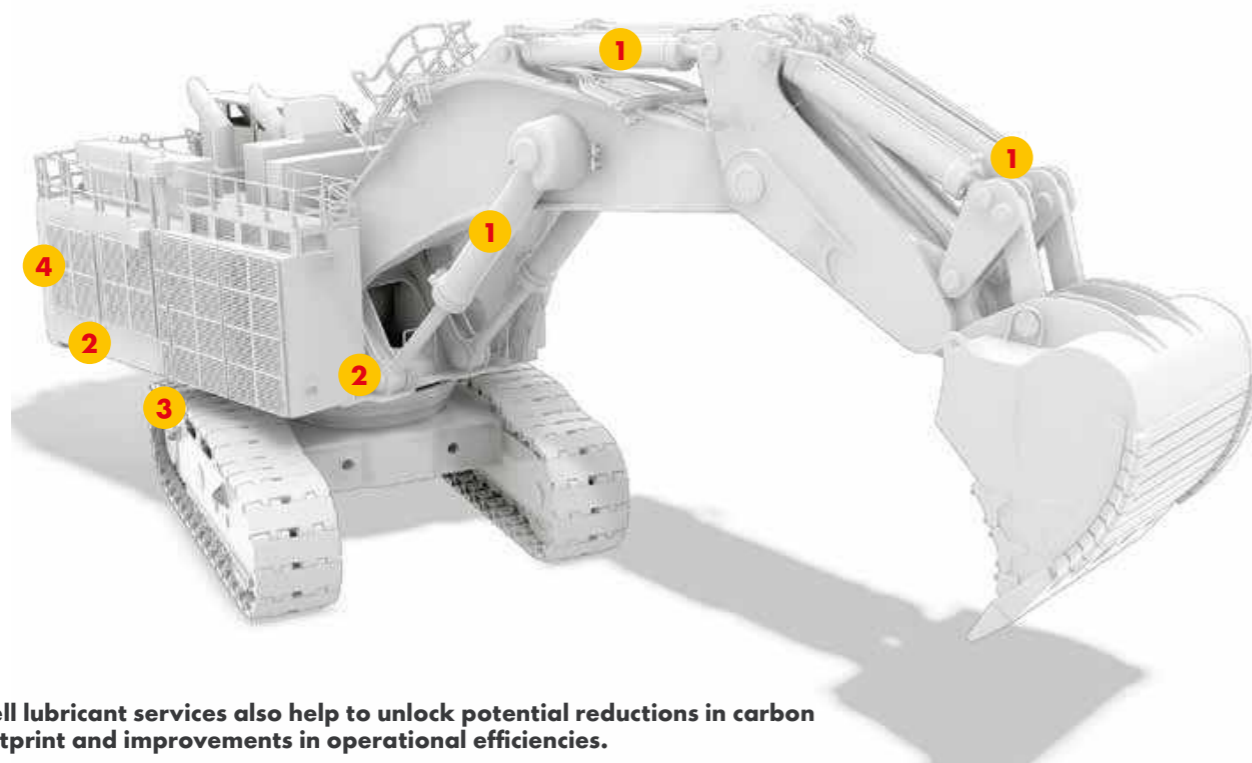
Component	Shell recommendation
1 Hydraulic systems	Shell PANOLIN S4 HLP Synth (or EAL) 46, 68, 100 Shell PANOLIN S2 Hydraulic DU EAL 46, 68
2 Gears	Shell PANOLIN S4 Gear (or EAL) 150*
2 Final drive and axles	Shell PANOLIN S4 Gear RS 80W90
3 Standard bearings	Shell PANOLIN S5 Grease EAL V120P 2
3 Pin and bush	Shell PANOLIN S5 Grease EAL V320 2
4 Heavy duty diesel engine	Shell PANOLIN Biomot LX 10W-40

Product recommendations are typical examples only. Always check the manufacturer's manual for the required products and specifications.

Which products should I use?

Reducing the environmental impact of critical operations does not mean that you need to compromise on productivity or protection.

Shell has a broad portfolio of products designed for a wide range of operating conditions and applications; these include lubricants especially suited for environmentally sensitive areas and operations in or near water.



Shell lubricant services also help to unlock potential reductions in carbon footprint and improvements in operational efficiencies.



NORTH ISLAND

WHANGAREI

275 Lower Port Rd, Whangarei
Ph +64 9 438 5417

AUCKLAND (SILVERDALE)

4A Manga Road, Auckland
Ph +64 9 379 0260

AUCKLAND (MANUKAU)

1 Mayo Road, Manukau City, Auckland
Ph +64 9 277 8857

CAMBRIDGE

218 Peake Road, Cambridge
Phone +64 7 949 7078

TAURANGA

6 Rerewai Place, Mt Maunganui,
Tauranga
Phone +64 7 575 3476

ROTORUA

Unit 1, 220 Te Ngae Road, Rotorua
Ph +64 7 345 6657

TAUPO

31 Pioneers Lane, Taupo
Ph +64 7 378 8673

GISBORNE

67 Awapuni Road, Awapuni, Gisborne
Ph +64 6 214 6490

NEW PLYMOUTH

19 Corbett Road, Bell Block, New Plymouth
Ph +64 6 755 2412

NAPIER

48 Niven Street, Onekawa, Napier
Ph 0800 848 267

PALMERSTON NORTH

171 Railway Road, Palmerston North
Phone +64 6 355 0740

WELLINGTON

C/O: 171 Railway Road,
Palmerston North
Phone +64 6 355 0740



TDX

World-class experience.
Local know-how.



SOUTH ISLAND

NELSON

5 Factory Road, Brightwater, Nelson
Ph +64 3 543 5220

GREYMOUTH

6 Kaiata Park Drive, Kaiata
Ph +64 3 768 9679

CHRISTCHURCH (HEAD OFFICE)

533 Halswell Junction Road, Christchurch
Ph +64 3 349 8738

CROMWELL

1-3 Nancy Place, Cromwell
Ph +64 3 488 4005

DUNEDIN

7 Sturdee Street, Dunedin
Ph +64 3 488 4005

INVERCARGILL

61 Benmore Street, Invercargill
Ph +64 3 215 6130

Version: 18/02/2025



Shell
PANOLIN